

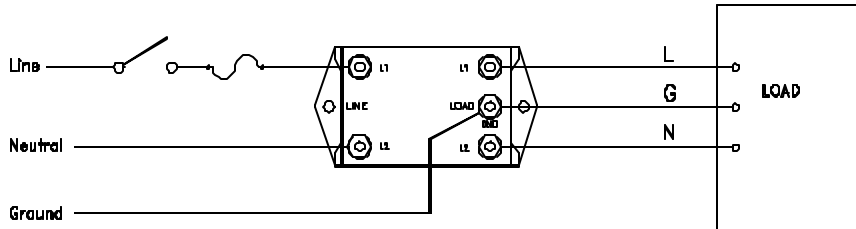
Installation Instructions

SPP-1206 and SPP-1207

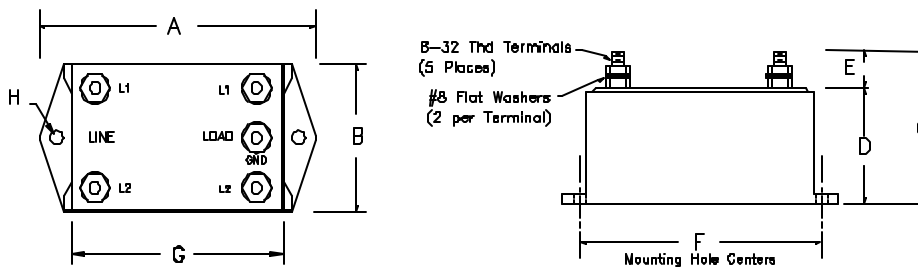
120 VAC Wire In

Balanced Filter
Surge Suppressor

Typical Installation:



Outline Dimensions:



DIMENSIONS ARE IN INCHES

MODEL	A	B	C	D	E	F	G	H (Hole Size)	WIRE CONNECTION	
SPP-1206	3.00	2.00	2.00	1.50	0.50	2.50	2.00	0.1875	8-32	Screw Post
SPP-1207	4.00	3.00	2.00	1.50	0.50	3.50	3.00	0.19	8-32	Screw Post

CAUTION: Make sure equipment power is OFF before installing suppressor.

Install the SPP-1206 or SPP-1207 after the AC power line switch and fuse, and as close to the electronic equipment it protects as possible. The ground terminal must be connected to a good earth ground (AWG #14 or larger). Dress output (clean) AC lines away from incoming power line. **The suppressor contains no internal fuse and can fail short under direct lightning exposure: therefore, proper fusing is essential.** Heat sinking is not required.

Wiring Instructions:

CAUTION: Turn power to equipment OFF at breaker before installing suppressor.

- (A) Cut L, N, and G lines at suppressor location.
- (B) Remove 1/4" of insulation from each conductor wire.
- (C) Tin the end of each exposed wire with solder.
- (D) Attach spade lug on each conductor to fit #10 screw and attach wires as indicated in figure above.
- (E) Keep ground wire (#14 AWG or larger) as short as possible.
- (F) Restore power to **ON**.